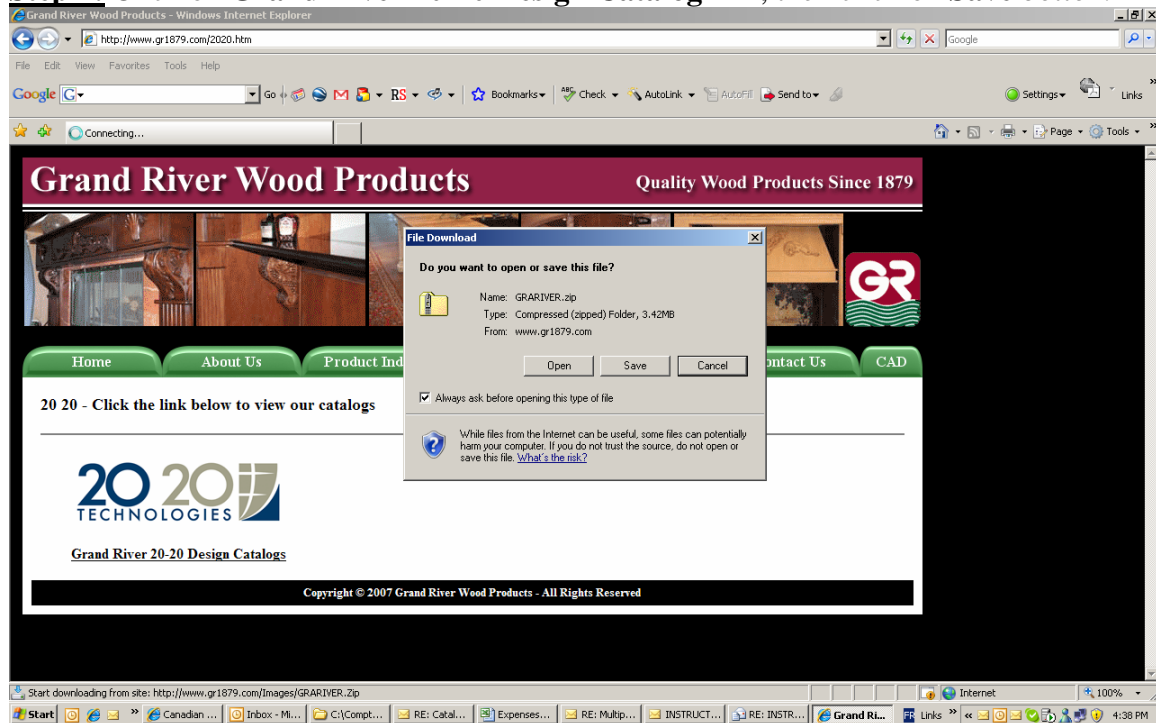
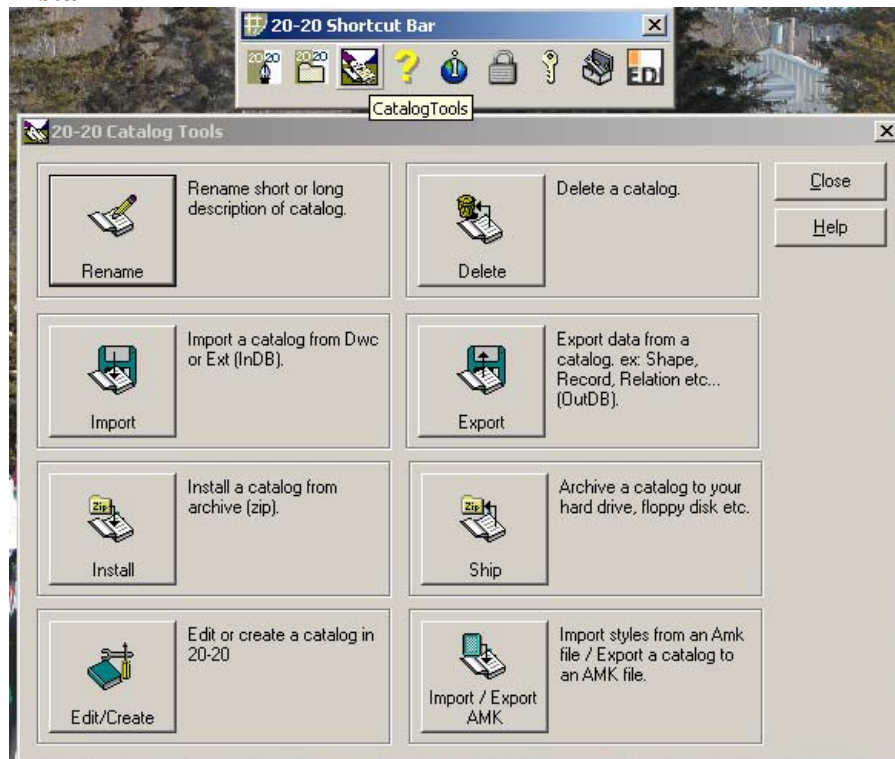


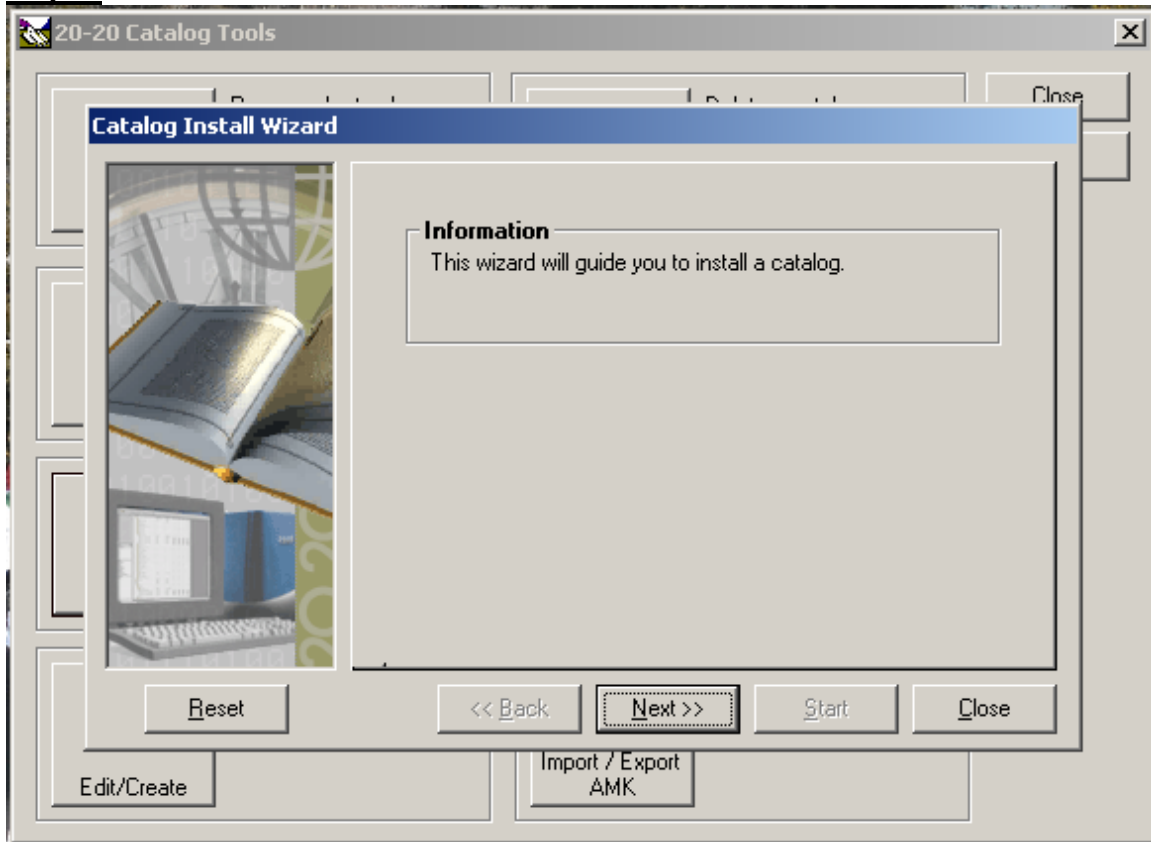
Step 1: Click on **Grand River 20-20 Design Catalog** link, then click on **Save** button.



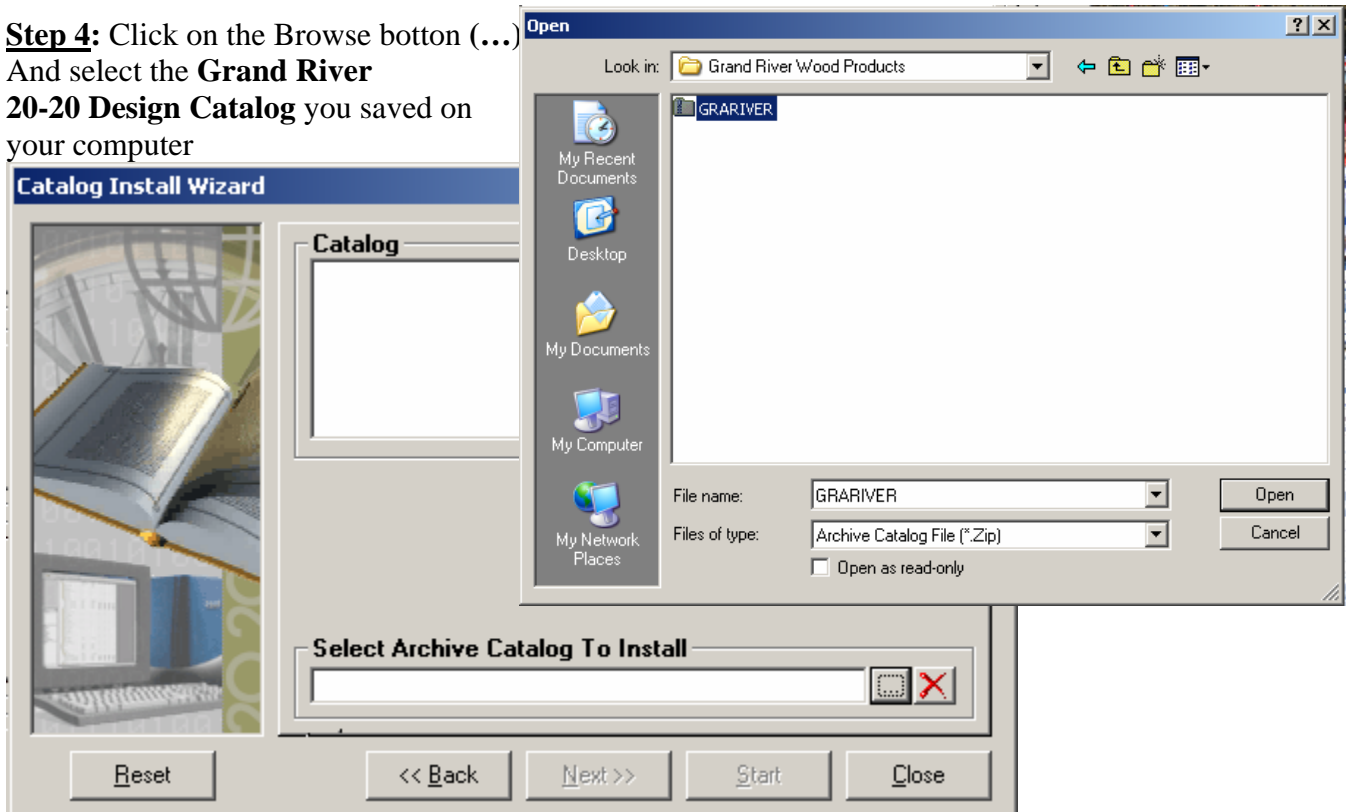
Step 2: Once the **Grand River 20-20 Design Catalog** has been saved onto your computer, you click on **Catalog Tools** icon from the 20-20 Shortcut Bar. Then click on **Install**



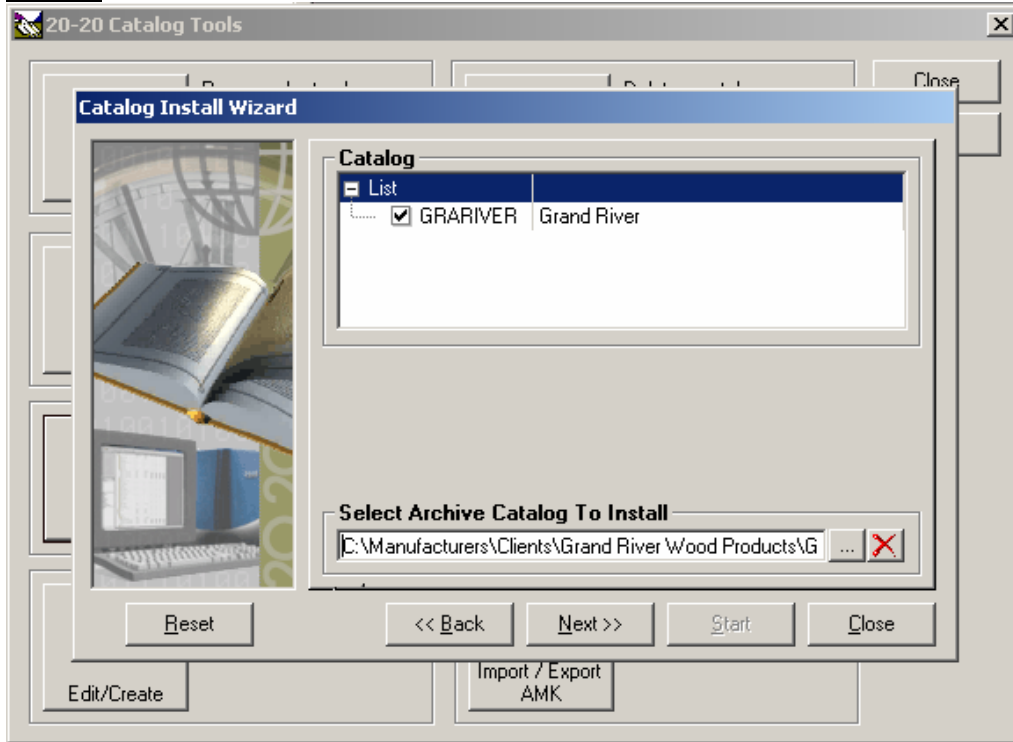
Step 3: Click on **Next**



Step 4: Click on the **Browse** button (...)
And select the **Grand River 20-20 Design Catalog** you saved on your computer



Step 5: Click Next



Step 6: Click on the **Start** button to initiate the installation process. Once it completes the installation you can open up your 20-20 Design software and start to design

